



Source: Google Image

ASSAM FLOODS 2023

Situation Report - 20th June 2023

INTRODUCTION

Assam is a highly flood-prone state with more than 40% (31.05 lakh hectares) of its land surface susceptible to severe hazards of floods. The state is located in northeastern India, between latitude 26.2006° N, and longitude 92.9376° E. It receives an average annual rainfall of 2818 mm or 200 cm. Brahmaputra is the main river of the state and around 32 MHa area of Brahmaputra valley is flood prone.

Floods occur each year in the state of Assam at a frequency of almost 3 to 4 waves of flood every year. From 1954 till date, it has experienced more than 13 major and disastrous floods.

CAUSES

- Assam has a moderate to steep gradient due to its location at an elevation of 45 meters to 1960 meters from the mean sea level. The areas on moderate slopes get submerged very often because of heavy rainfall.
- The flood situation is worsened as Assam receives river water from the states like Arunachal Pradesh and Meghalaya.
- Climate change will result in more frequent and severe floods. High magnitudes of flash floods are likely to increase due to glacier melting or cloud burst, etc.
- The riverbed of the Brahmaputra has increased by more than 50% through erosion.
- Brahmaputra's tributary Kopili at Kampur is flowing above the danger mark

RED ALERT

The India Meteorological Department (IMD) has released a 'Red Alert' (immediate action) and has forecasted 'very heavy' to 'extremely heavy' rainfall in multiple districts of Assam for the next five days. In a 'Special Weather Bulletin', the Regional Meteorological Centre (RMC) of IMD in Guwahati issued a 'Red Alert' for a duration of 24 hours starting from June 19th, followed by 'Orange Alerts' (Preparedness for action) for the subsequent two days, and a 'Yellow Alert' (Vigilance & staying updated) for June 22nd.

HIGHLIGHTS OF THE FLOOD SITUATION ON 20TH JUNE 2023

As per Assam State Disaster Management Authority (ASDMA) Report

AFFECTED

- 19 Districts - Chirang, Darrang, Dhemaji, Dhubri, Dibrugarh, Kokrajhar, Lakhimpur, Nalbari, Sonitpur and Udalguri districts. Lakhimpur district is the worst hit with over 22,000 people affected, followed by Dibrugarh with more than 3,800 people and Kokrajhar with almost 1,800 persons, it added.
- 38 Revenue Circles
- 523 Villages
- 34,089 Population including 14, 675 women and 3,787 children
- 10 Human Lives Lost
- 5842.78 Crop Area (Hect.)
- 52276 Animals

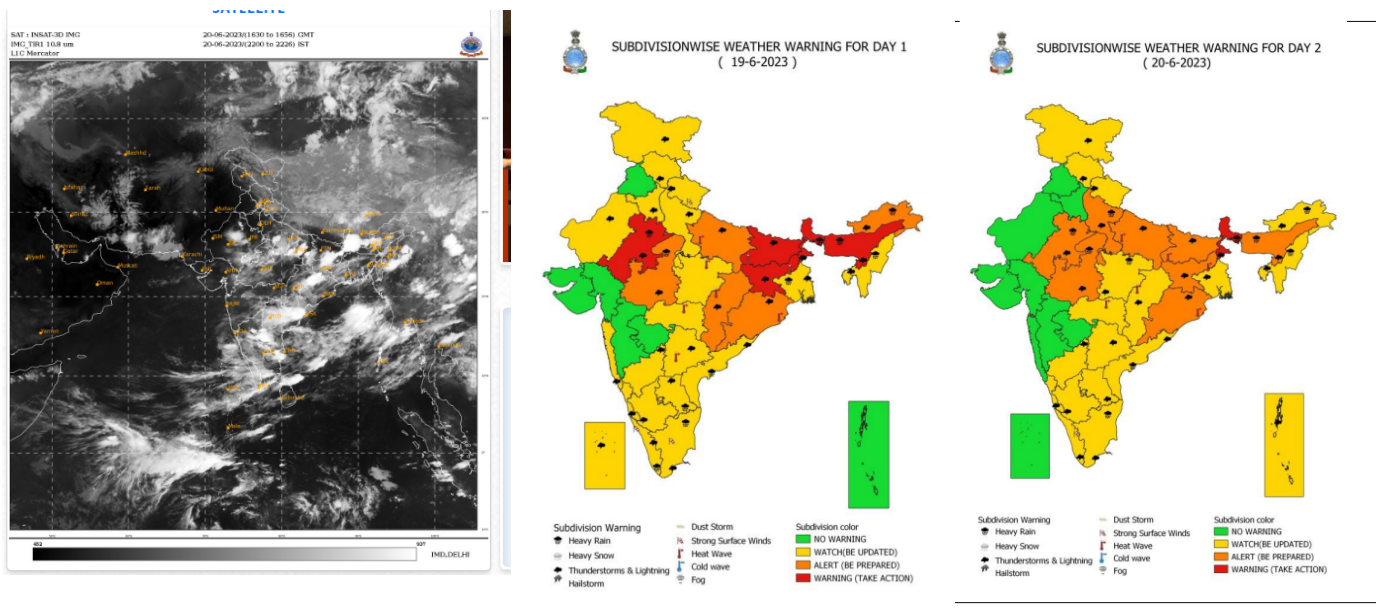
DAMAGED

- 317 houses
- 1 embankment breached - Harisinga - Dahalahabi embankment
- 3 embankment affected - Gohpur, Mangaldoi, Goreswar
- 64 road
- 3 bridges - Barpeta, Manikpur, Gossaigaon
- Massive Level of Erosion - 12 districts/sub divisions
- Landslide in Cachar, Karimganj & Dima - Hasao
- Urban Flood in Darrang, Jorhat, Kamrup, Kokrajhar, Nalbari

RESCUE & RELIEF OPERATIONS

- 11 Medical Team deployed
- 1 relief camp in Kokrajhar, where 56 persons are sheltered
- 24 relief distribution centres in 4 districts.

SUBDIVISION WEATHER MAP



FORECAST

On 16th June, 2023 (by IMD)

- Heavy to Very Heavy (7-20 cm in 24 hrs) with extremely heavy rainfall (>20 cm in 24 hours) at isolated is very likely over Chirang and Baksa districts.
- Heavy to Very Heavy (7-20 cm in 24 hrs) is very likely over Kokrajhar, Barpeta, Bongaigaon, Nalbari, Lakhimpur, Dhemaji, Dibrugarh districts.

EXPECTED IMPACT BY IMD

- Roads are likely to experience localized flooding, with low-lying areas and underpasses in urban regions being particularly affected.
- Heavy rainfall may occasionally cause reduced visibility.
- Traffic disruptions can be expected in major cities due to waterlogged roads, resulting in longer travel times.
- Kutcha roads may sustain minor damages.
- Vulnerable structures are at risk of being damaged.
- Localized landslides/mudslides may occur.
- Horticulture and standing crops in certain areas may suffer damage due to inundation.
- There is a possibility of riverine flooding in specific river catchments.

RECOMMENDED ACTIONS BY IMD

- Prior to commencing your journey, check for any traffic congestion along your route.
- Adhere to any issued traffic advisories pertaining to the situation.
- Avoid visiting areas that frequently encounter waterlogging problems.
- Refrain from staying in structures that are susceptible to damage.

SITUATION IN OTHER NORTH EAST STATES OF INDIA

Sikkim

- Multiple landslides occurred in the West Sikkim district due to torrential rain, resulting in significant damage.
- Approximately 100 houses were affected, and bridges were swept away.
- Flash floods were observed in the upper regions of College Khola Valley, with an impact at Simphok.
- Landslides led to the closure of National Highway 10. Over 2,300 tourists in North Sikkim, who were stranded due to flash floods and landslides, were rescued by the Indian Army and Border Roads Organisation (BRO). A temporary crossing was established to facilitate their rescue.
- The Indian Army troops provided the rescued tourists with food, shelter, and medical assistance.
- The Dentam Sub Division in the Gyalshing district also experienced severe landslides, resulting in damage to houses and roads. Agricultural land and livestock have also been adversely affected. A suspension bridge over College Khola at Lower Sapung was washed away by the mudslides.
- Authorities promptly provided immediate relief to the affected individuals, and restoration work on roads and bridges has commenced.
- Orange alert has been issued for Northeast India.

Meghalaya

- Due to a significant landslide triggered by heavy rainfall in Meghalaya, two young girls tragically lost their lives after being buried alive.
- The district administration of West Khasi Hills has issued a warning about the possibility of further heavy rainfall. They have urged residents residing near the river to evacuate their homes immediately and relocate to safer areas.
- In the East Jaintia Hills district, mudslides have caused the disruption of NH6, which serves as a crucial connection between Meghalaya, Silchar in eastern Assam, Mizoram, and Tripura. The heavy rainfall has also had severe consequences for numerous houses and shops situated near the Nondein River.
- Flash floods have resulted in the interruption of road communication in several localities.



DOCTORS FOR YOU PROPOSED HUMANITARIAN RESPONSE

HEALTH CAMPS

- Health Camps in flood hit districts
- Free Health Check Ups
- NCD Screening
- Free Medicines
- Doctors consultations

DIGNITY KITS

- Especially for Women comprising of Sanitary Pads, Marking Cloth/Towels, etc

RATION KITS

- Family Food Packets/Rahat Kits comprising of ready to use eatable items such as Grams, Biscuits, Jaggery, Peanuts, Rice flakes, Puff rice, etc)

WASH KITS

- Comprising of Bucket, Mug, Bleaching Powder, Chlorine Tablets, Soap, Detergent, Toothpaste, Tooth Brush, Antiseptics, Bandage, Sanitisers, etc

SHELTER KITS

- Tarpaulin sheet, Blanket, Bedsheets, Torch, Candle, Match box, Mosquito Net, Mosquito Coil, etc

REFERENCES

- https://www.asdma.gov.in/pdf/flood_report/2023/Daily_Flood_Report_20.06.2023.pdf
- https://internal.imd.gov.in/press_release/20230619_pr_2390.pdf
- <https://www.theweek.in/news/india/2023/06/20/assam-flood-31000-people-affected-in-10-districts.html>
- <https://www.ndtv.com/india-news/assam-floods-2023-first-wave-of-flash-floods-in-assam-this-year-34-000-affected-in-11-districts-4128552>
- <https://economictimes.indiatimes.com/news/india/flood-situation-worsens-in-assam-over-34000-hit/articleshow/101142679.cms>
- <https://weather.com/en-IN/india/news/news/2023-06-20-why-does-assam-experience-monsoon-flooding-year-after-year>
- <https://mausam.imd.gov.in/guwahati/mcdata/ibfguwahati.pdf>
- <https://www.indiatoday.in/india/story/north-sikkim-heavy-rainfall-flash-flood-tourists-rescued-landslide-nh10-closed-2394297-2023-06-17>
- <https://www.timesnownews.com/videos/mirror-now/society/sikkim-heavy-rainfall-causes-massive-property-damage-rescues-ops-underway-video-101100638>